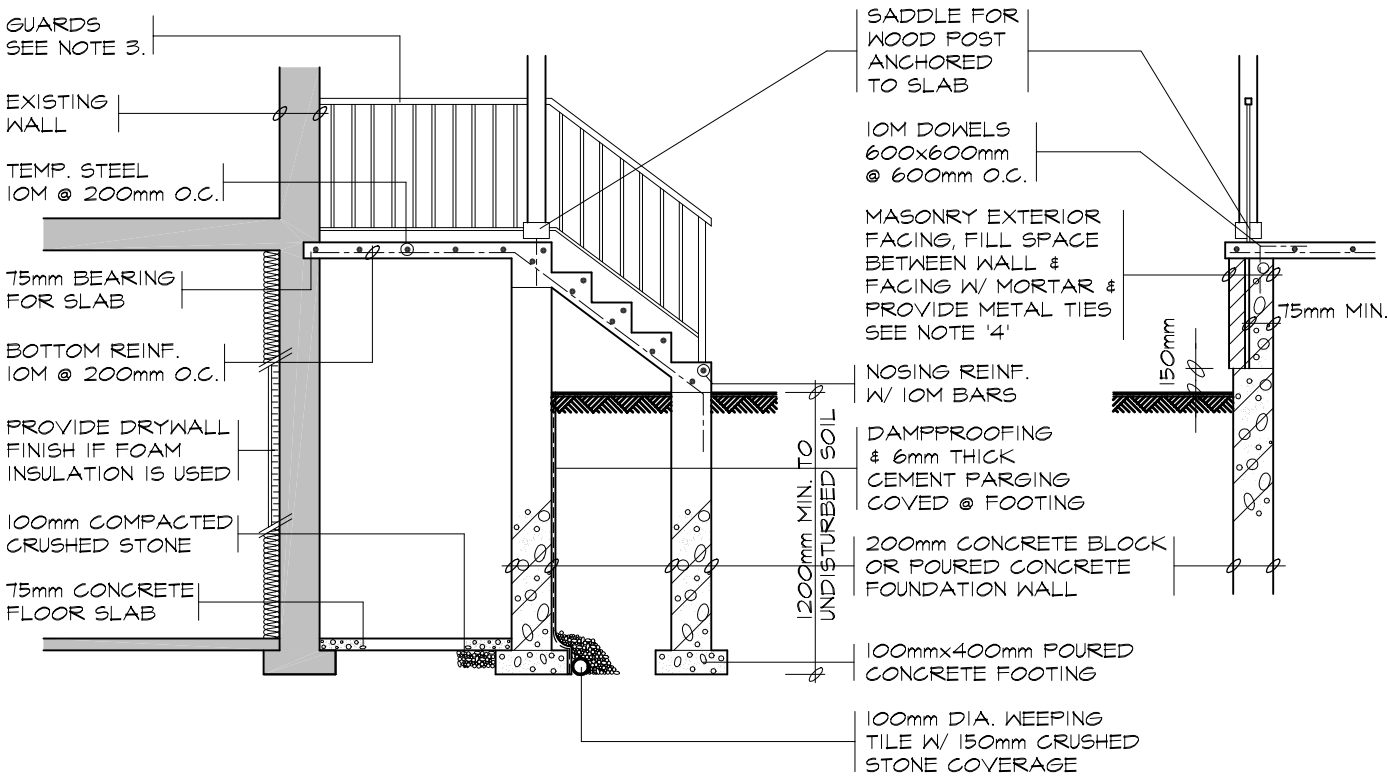


FOUNDATION PLAN

GROUND FLOOR PLAN



SECTION 'A'

SECTION 'B'

GENERAL NOTES

1. **EXTERIOR STAIRS**
 125mm - 200mm RISE
 210mm - 355mm RUN
 235mm - 355mm TREAD
 STEPS ARE TO BE UNIFORM THROUGHOUT FLIGHT
2. **HANDRAILS**
 ARE REQUIRED WHERE STEPS HAVE MORE THAN 3 RISERS. HANDRAIL HEIGHT 800mm - 965mm
3. **GUARDS**
 ARE REQUIRED AROUND CONCRETE SLAB IF MORE THAN 600mm ABOVE GRADE & ON BOTH SIDES OF STAIRS
 MINIMUM 900mm HIGH FOR STAIRS
 MINIMUM 900mm HIGH FOR PORCHES UP TO 1800mm ABOVE GRADE.
 MINIMUM 1070mm HIGH FOR GREATER HTS.
 MAXIMUM 100mm BETWEEN PICKETS AND NO MEMBER DESIGNED TO FACILITATE CLIMBING BETWEEN 140mm & 900mm
4. **MASONRY TIES**
 WHEN BRICK FACING IS USED ABOVE GROUND LEVEL, PROVIDE 0.76mm THICK & 22mm WIDE CORROSION RESISTANT METAL TIES @ 600mm HORIZ. & 500mm VERTICAL
5. **FOUNDATION WALLS**
 THICKNESS OF UNREINFORCED FOUNDATION WALLS LATERALLY SUPPORTED AT THE TOP ARE DEPENDANT UPON HEIGHT OF FINISH GRADE ABOVE BASEMENT FLOOR
 UNIT MASONRY THICKNESS 190mm - MAX. HEIGHT 1200mm
 UNIT MASONRY THICKNESS 240mm - MAX. HEIGHT 1800mm
 UNIT MASONRY THICKNESS 290mm - MAX. HEIGHT 2200mm
6. **CONCRETE**
 MINIMUM CONCRETE STRENGTH SHALL BE 32Mpa W/ 5%-8% AIR ENTRAINMENT
 CONCRETE SLAB THICKNESS 125mm
 PROVIDE MIN. 30mm CLEAR CONCRETE COVER TO REINFORCING BARS



TITLE
CONCRETE PORCH & COLD CELLAR
 PLANS, SECTIONS & NOTES

DWG. NO.
DO2
 2007