



## 477 King Street, Welland, Ontario

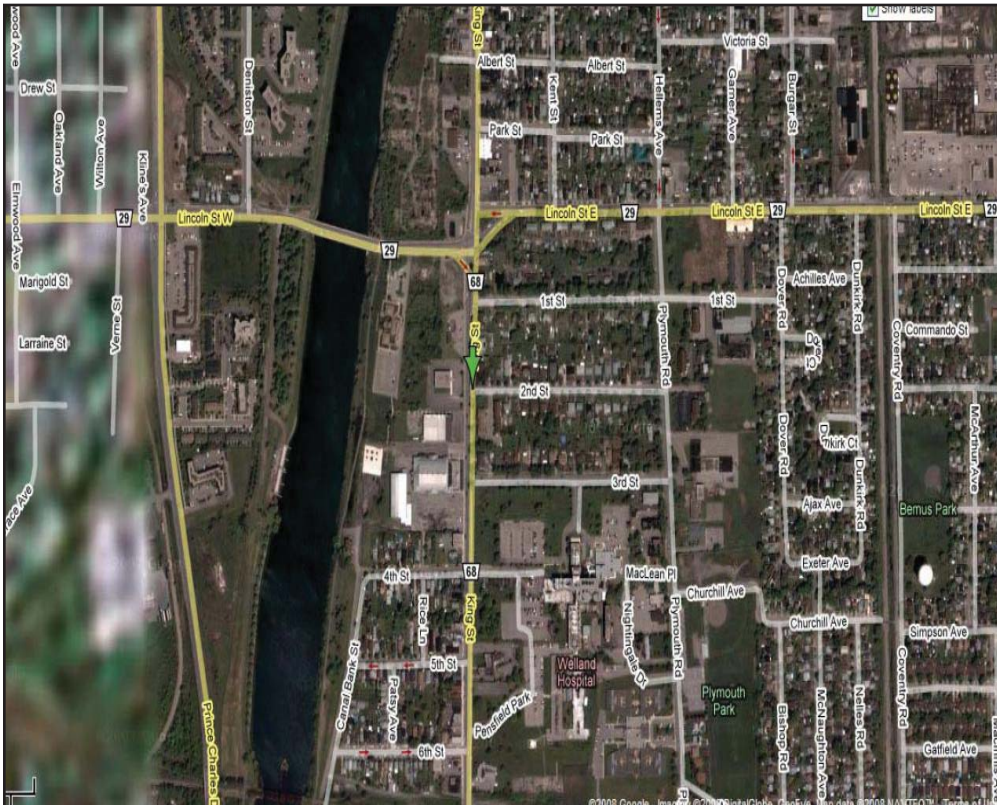
Location:	King Street, City of Welland, a stone's throw from the Welland County General Hospital
Available space:	835 sq. ft 1,206 sq. ft 1,982 sq. ft.
Parking:	Plenty of parking available on-site
Taxes:	\$4.05 per sq. ft
Operating costs:	\$10.94 per sq. ft.

### Additional Information:

This is a first class medical building with three units available. The property has two floors. All three available units are on the second floor. The building is handicap accessible and has an elevator.

This is a great high traffic location and easily identifiable from the street. Rexall Pharmacy and the intersection of Lincoln and King are located just north of this building and is the ideal location to locate your new or existing medical practice.

**ASKING RENT: \$9.00 per sq. ft.**



### For Additional Information

For more information please visit our web page: [www.dtzbarnicke.com](http://www.dtzbarnicke.com)

**Simon Prentice**

Sales Representative

Email: [simon.prentice@dtzbarnicke.com](mailto:simon.prentice@dtzbarnicke.com)

Direct Tel: (905) 354 7413

**DTZ Barnicke**

London Professional Building

4056 Dorchester Road, Lower

Niagara Falls, Ontario, Canada, L2E 6M9

Tel: (905) 354 7413

Fax: (905) 354 8798

Toll Free: 1 800 618 7076

[www.dtzbarnicke.com](http://www.dtzbarnicke.com)