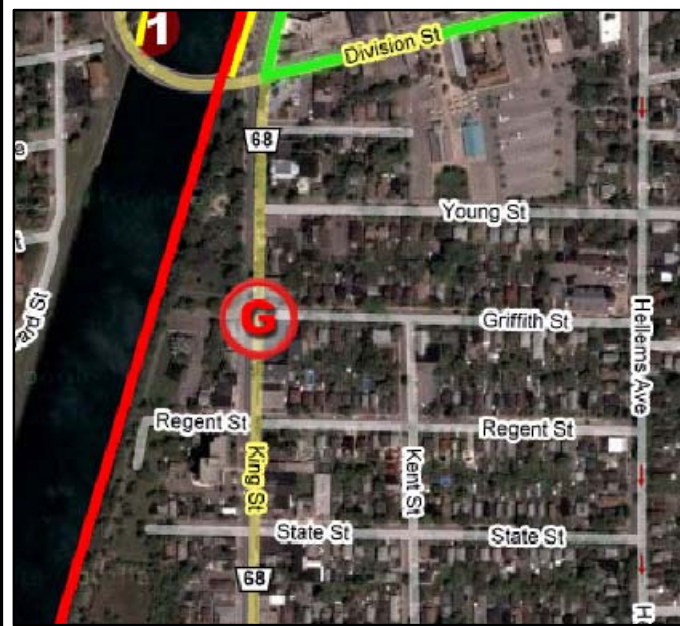


CITY OF WELLAND DOWNTOWN REVITALIZATION

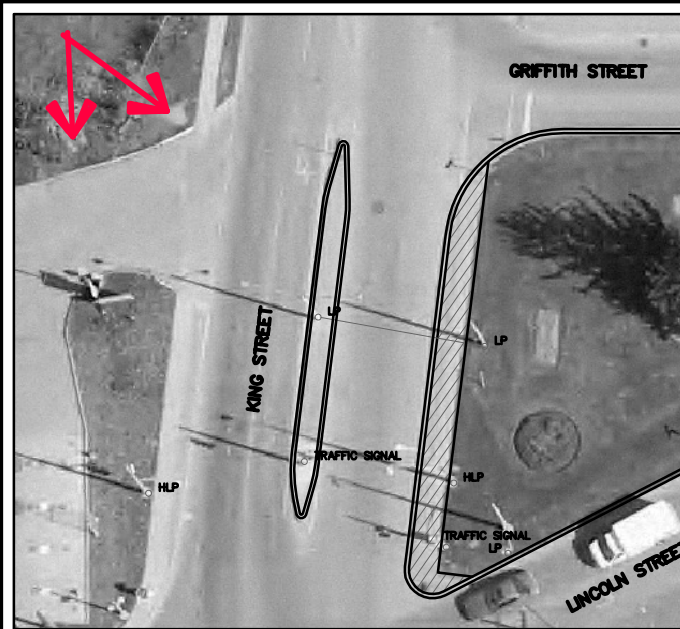
GATEWAY FEATURES

GATEWAY 6

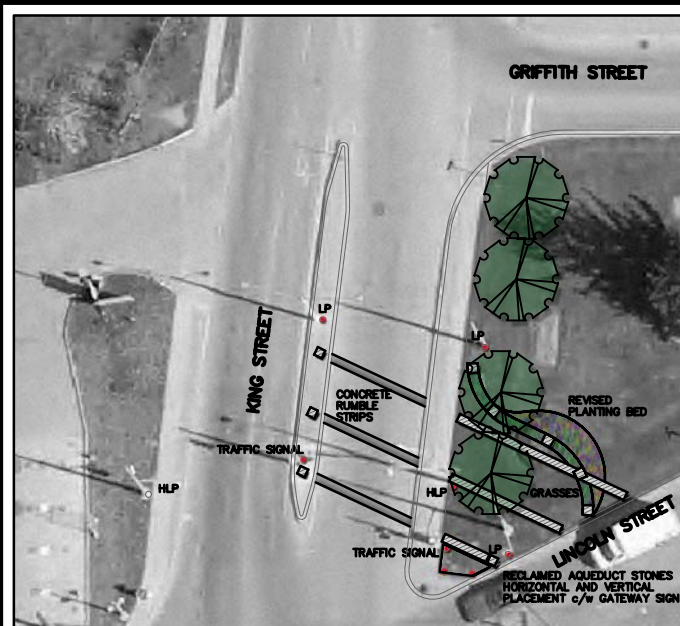
September 9, 2007



KEY PLAN



EXISTING CONDITIONS AND CONSTRAINTS



PROPOSED GATEWAY DESIGN - PLAN VIEW



PHOTO VISUALIZATION

Gateway 6 - King St. and Lincoln St. Intersection

Site Description:

The intersection of these two Regional roads, #68 (King Street) and #29 (Lincoln Street), creates a leftover triangular piece of land which presents opportunities for establishing a gateway feature marking the entrance to downtown Welland when approaching from the south. The site currently features a large spruce tree in the centre, surrounded by a series of ornamental planting beds.

Design Rationale:

Also a busy intersection, this gateway will require a strong visual impact to be effective. We proposed to utilize the design vocabulary established at the other gateways, particularly the elements used at Prince Charles Drive and West Main - stone panels, signage, and rumble strips. We also propose the ribbon of ornamental grasses as well as taller canopy trees to strengthen the frame and views.



BEFORE

Legend

- Existing Vertical Constraints
- Existing Trees
- Proposed Planting Bed
- Reclaimed Aqueduct Stones Placed Horizontally
- Reclaimed Aqueduct Stones Placed Vertically
- Proposed Deciduous Tree
- Proposed Coniferous Tree
- Proposed Ornamental Tree
- Proposed Shrubs
- Proposed Sign

